

SYSTEM **KAN-therm**

Push

How does the real saving on installations look like?



SYSTEM
KAN-therm



**Find out how to lower
your costs by even 32%**

TECHNOLOGY OF SUCCESS



www.kan-therm.com

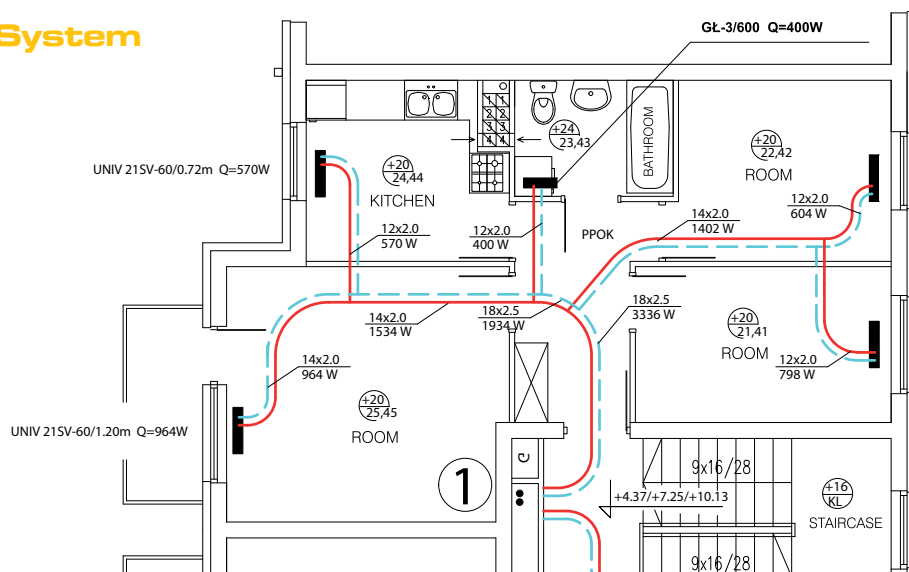
ISO 9001

Investment costs

Application of diameters 12×2, 14×2 and 18×2,5 mm in horizontal distribution layouts.

KAN-therm Push System

Diameters: 12, 14, 18 mm



Investment value

PE-Rt pipes: 139 €

PE-Xc pipes: 156 €

Do not save on material quality – optimize!

System	Type of pipe	Value	Difference
Push	PE-Xc	156 €	-17%
	PE-RT	139 €	-32%
System with flow contraction	–	183 €	0%

Investment cost with the use of KAN-therm Push System and PE-RT 12-18 mm pipes **is as much as 32% lower** when compared to systems with flow contraction. With PE-Xc pipes the savings are **even 17%**.

12×2.0 mm in heating installations

We achieve:

- optimal water flowrate in pipes – meeting the conditions of pipeline venting
- reduction of installation water capacity and enhancing the installation adjustment properties
- better heat transfer performance (smaller heat losses in transfer)
- simplicity of guiding and laying pipes with smaller diameters
- **lower investment costs**

KAN Sp. z o.o.

ul. Zdrojowa 51, 16-001 Białystok-Kleosin

Tel: +48 85 74 99 200, fax +48 85 74 99 201

e-mail: kan@kan-therm.com

TECHNOLOGY OF SUCCESS

